

The Temple of the Lord

Preparations and construction; furnishings; Solomon's other buildings; works in bronze and brass; the dedication; other Chronicler's additions; divine manifestations.

1 Kings 6–8; 1 Chronicles 22, 28–29; 2 Chronicles 2–7.

The Temple and Other Buildings of Solomon (5:1–8:66); cf. 2 Chronicles 2:1–7:22

- Preparations for the Temple (5:1–18)
- Description and construction of the temple (6:1–22)
- Furnishings of the temple (6:23–38)
- Solomon's palace and other buildings (7:1–12)
- Products of Hiram the Bronzeworker (7:13–47)
- Dedication of the Temple (8:1–66)

Preliminaries

- The Chronicler's History emphasizes the role of David in the planning and preparation of the temple
 - Because he had "shed blood abundantly," he could not build it himself (1 Chronicles 22:8, 28:3)
 - YHWH had chosen Solomon "to be my son, and I will be his father" and promised to establish his kingdom [as long as he was constant in the commandments!]
 - He received the "pattern" for the temple, its courts and its furnishings
 - Pattern is the same work used for the visionary blueprint that Moses had received of the Tabernacle (cf. Exodus 25:9, 40)
 - CH stresses parallels with the Tabernacle, as well as emphasizing the parts played by priests and especially Levites
- David and the people gather much of the treasure for the temple—it is not just a project of Solomon's
- David ends his reign with a prayer or psalm, blessing God and praying for Solomon (1 Chronicles 29:10b–19)
- The people then worship, sacrifice, and "eat and drink before the Lord" while Solomon is anointed king a second time (1 Chronicles 29:20–25)

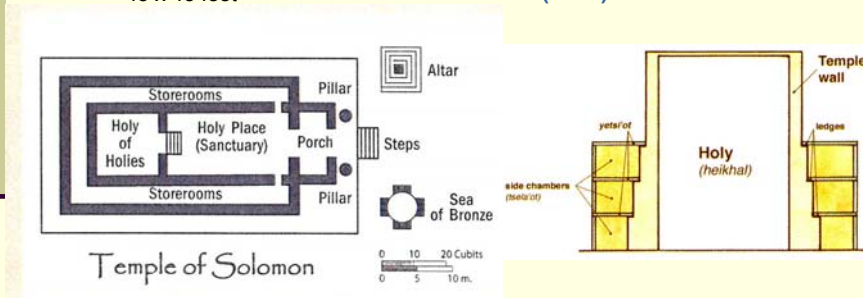
1/21/2009

5. The Temple of the Lord

3

Description and Construction of the Temple (6:1–22)

- Begun between 966–953 B.C., took 7 years to build
- Dimensions 90 x 30 x 30 cubits
 - Cubit ≈ 18 inches, hence 135 x 45 x 45 feet
- Divisions
 - Porch (*ulam*)
 - Holy Place or nave (*hêkal*)
 - Holy of Holies or oracle (*debir*)

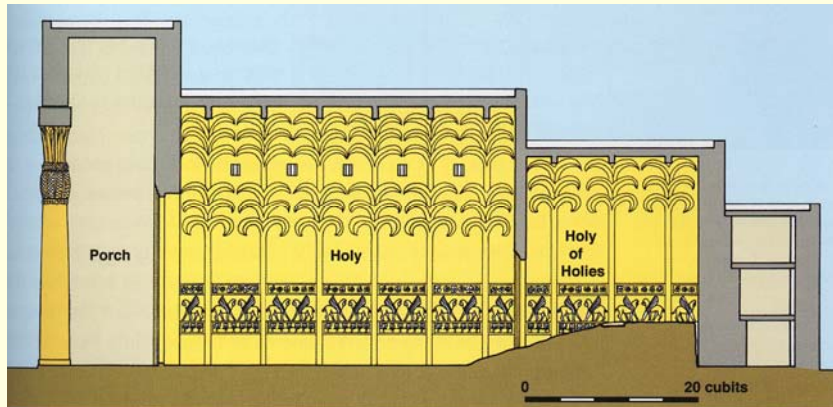


1/21/2009

5. The Temple of the Lord

4

Cross-section of Temple with Artist's Conception of Decorative Details

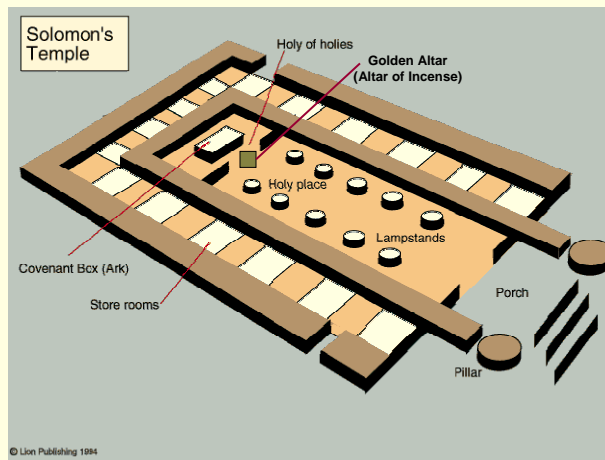


1/21/2009

5. The Temple of the Lord

5

The Temple and the Tabernacle



- The Temple of Solomon was approximately twice the dimensions of the Tabernacle, and it contained twice the number of lamp stands and tables for shewbread

© Lion Publishing 1994

1/21/2009

5. The Temple of the Lord

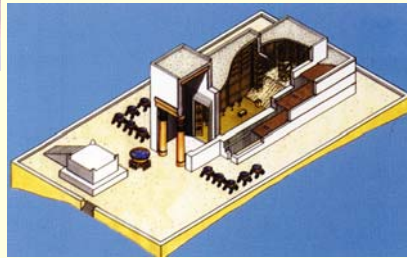
6

Products of Hiram the Bronze Worker (7:13–47)



- Brass Pillars, Jachin and Boaz (7:15–23)
- The Brazen Sea (7:24–26)
- Bases and basins (7:27–39)
- Other implements and utensils (7:40–47)

- Hiram (not the king), a son of a widow of Naphtali, was the craftsman responsible for most of the exterior utensils
 - In Chronicles he is of the tribe of Dan (more below)
 - He is also an important figure in Freemasonry



1/21/2009

5. The Temple of the Lord

7

Jachin, “He Establishes”



1/21/2009

5. The Temple of the Lord

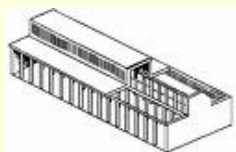
8

Solomon's Palace and Other Buildings (7:1–12)

- **House of the Forest of Lebanon** (7:2–5)
- **House of Pillars** (7:6)
- **Porch of the Throne** (or Judgment, 7:7)
- **The King's House** (7:8a)
- **House for Pharaoh's Daughter** (7:8b)

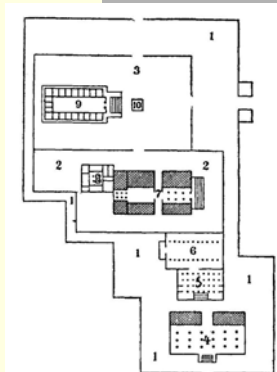


1/21/2009



5. The Temple of the Lord

- **Hint of a problem:** *his personal and royal buildings took almost twice as long (13 years) and cost perhaps twice as much as the temple!*



GROUND PLAN OF SOLOMON'S BUILDINGS (After Benzinger)

1. Great Court; 2. Other Court; 3. Court of the Temple; 4. House of the Forest of Lebanon; 5. Porch of Pillars; 6. Porch of Judgment; 7. King's House; 8. House of Pharaoh's Daughter; 9. Temple; 10. Altar.

9

Dedication of the Temple (8:1–66)

- **Ark transferred** (8:1–13)
- Solomon's speech (8:14–21)
- **Solomon's prayer of dedication** (8:22–53)
 - note seven petitions (vv. 31–32, 33–34, 35–36, 37–40, 41–43, 44–45, and 46–53 [this last with an exilic promise])
 - Compare with D&C 109 and the dedication of the Kirtland Temple
- Solomon blesses the assembly (8:54–61)
- **Solomon offers sacrifice** (8:62–66)

1/21/2009

5. The Temple of the Lord

10

Chronicler Additions

- **The Chronicler's History (CH) focuses more on David, the temple, and temple personnel** (notably Levites)
 - Inner court is called "Court of the Priests" (see 2 Chronicles 4:9)
 - Note the addition of **Levite singers and liturgical music** in 2 Chronicles 5:11–13 and 7:6
 - Also mark the **attention to feasts and temple ritual** in 2 Chronicles 8:12–16
- Hiram (or "Hiram") is of Dan (not Naphtali as in 1 Kings 7:14) to make him more **parallel to Oholiab the Danite** craftsman of Exodus 31:6, 35:64
- Many **parallels with the Tabernacle**, especially in the use of blue, purple, crimson, and white linen, colors representing the elements (see 2 Chronicles 3:7, 14)

1/21/2009

5. The Temple of the Lord

11

Divine Manifestations

- A cloud of glory, reminiscent of the pillar of fire by night and shadow by day of the wilderness wanderings, fills the temple when the ark is installed (1 Kings 8:10–11)
- **Divine manifestations are more patent in CH**
 - First manifestation occurs after the Levites praise YHWH through song (2 Chronicles 5:13)
 - **Glory of the Lord is revealed to the priests and other temple personnel**
 - A second manifestation occurs after Solomon's prayer (2 Chronicles 7:1–3)
 - **Fire comes down from heaven and consumes the sacrifice** as in the first sacrifice in the Tabernacle (cf. Leviticus 9:23)
 - **Glory of the Lord fills the house and is seen by all the gathered children of Israel**

1/21/2009

5. The Temple of the Lord

12